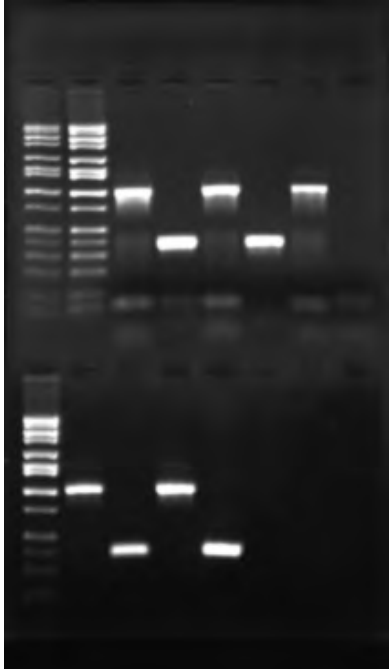
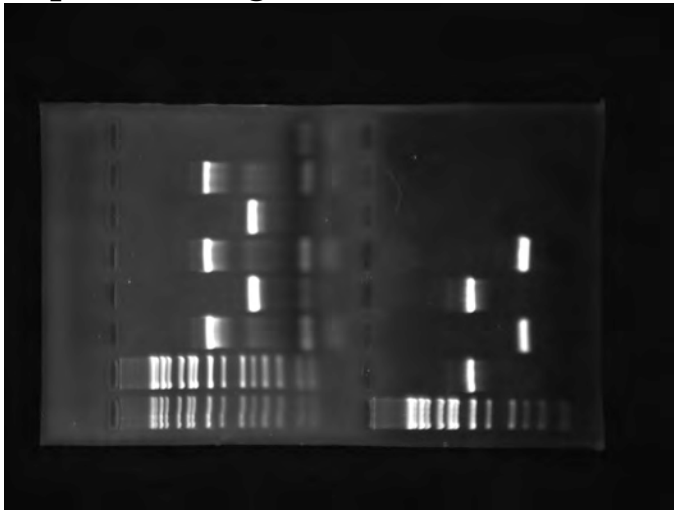


“Processing” your Gel Image using an image editing program such as Photoshop or Image J

Image J (Image processing and analysis) is available free:
<http://rsbweb.nih.gov/ij/>

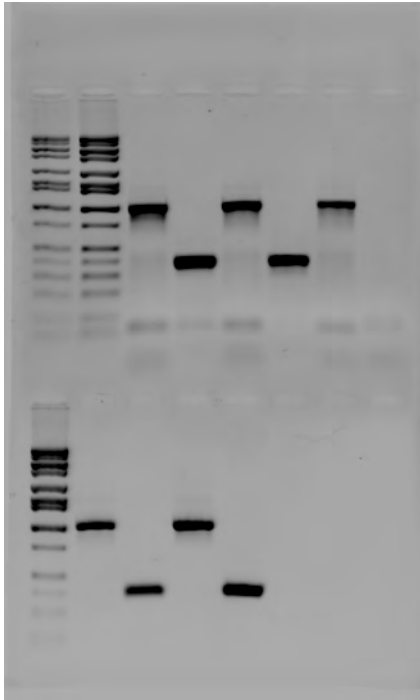
Captured Image:



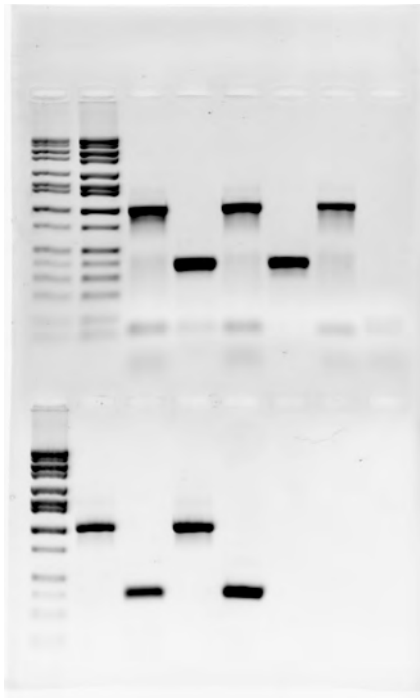
Rotate* and Crop:

* some programs (like Photoshop) allow free rotation so you can straighten up an image rather than just flipping it 90⁰ or 180⁰

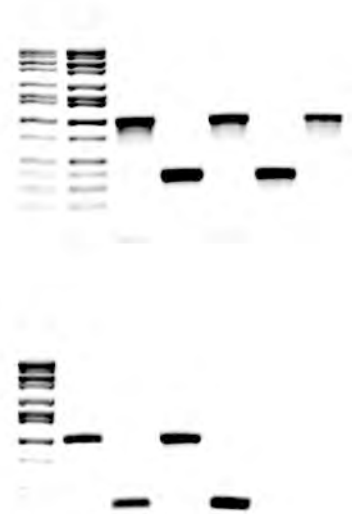
continues on next page..



Invert image --
you will have to
scout around in
the program you
are using to
figure out how to
do this

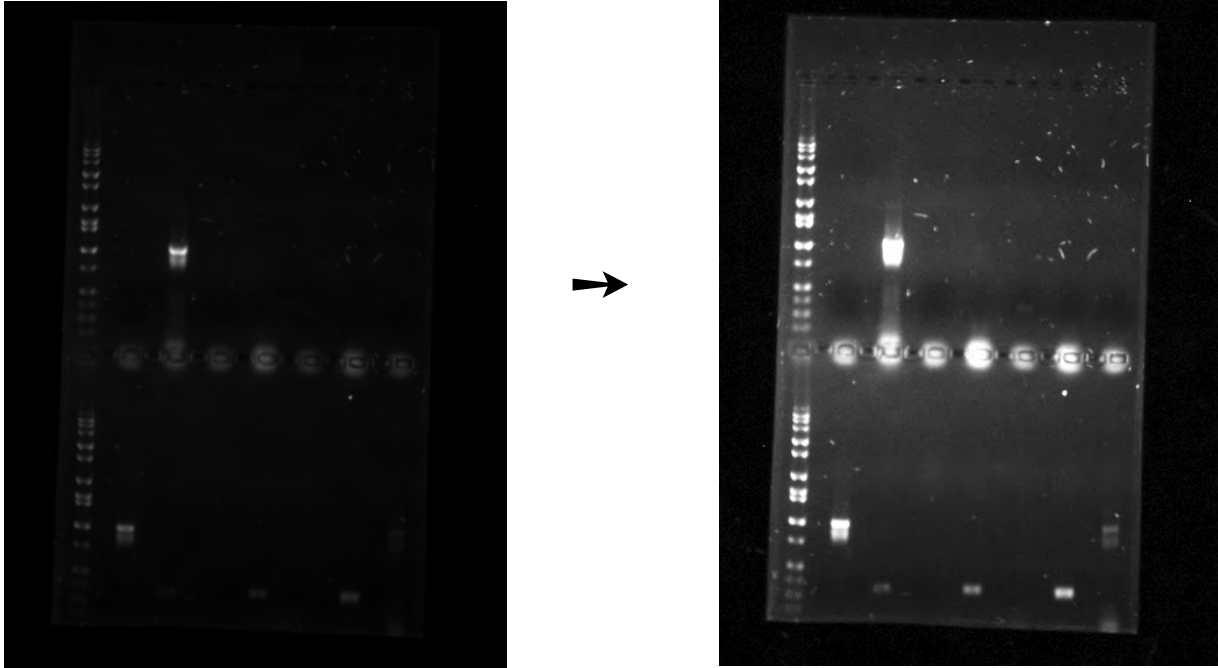


Play around with
Exposure,
Contrast and
Brightness
controls to
“enhance” your
image.
DON'T make
troublesome bands
go away
though... → →



See next page for example with underexposed image.....

If your gel photo appears underexposed, play around with *exposure*, *contrast* and *brightness* to bring up bands that might not be visible in the original capture.



See next page for labeling suggestions

Label each lane of gel carefully. Label all HiLo bands that are clearly identifiable.

An alternative labeling scheme would be to number each lane and then provide a detailed key next to the gel

