

2.8 Members of the primate superfamily Hominoidea

(A) Gibbon



(B) Orangutan



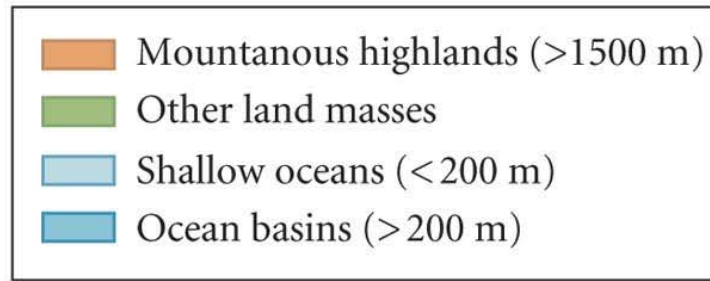
(C) Gorilla



(D) Chimpanzee

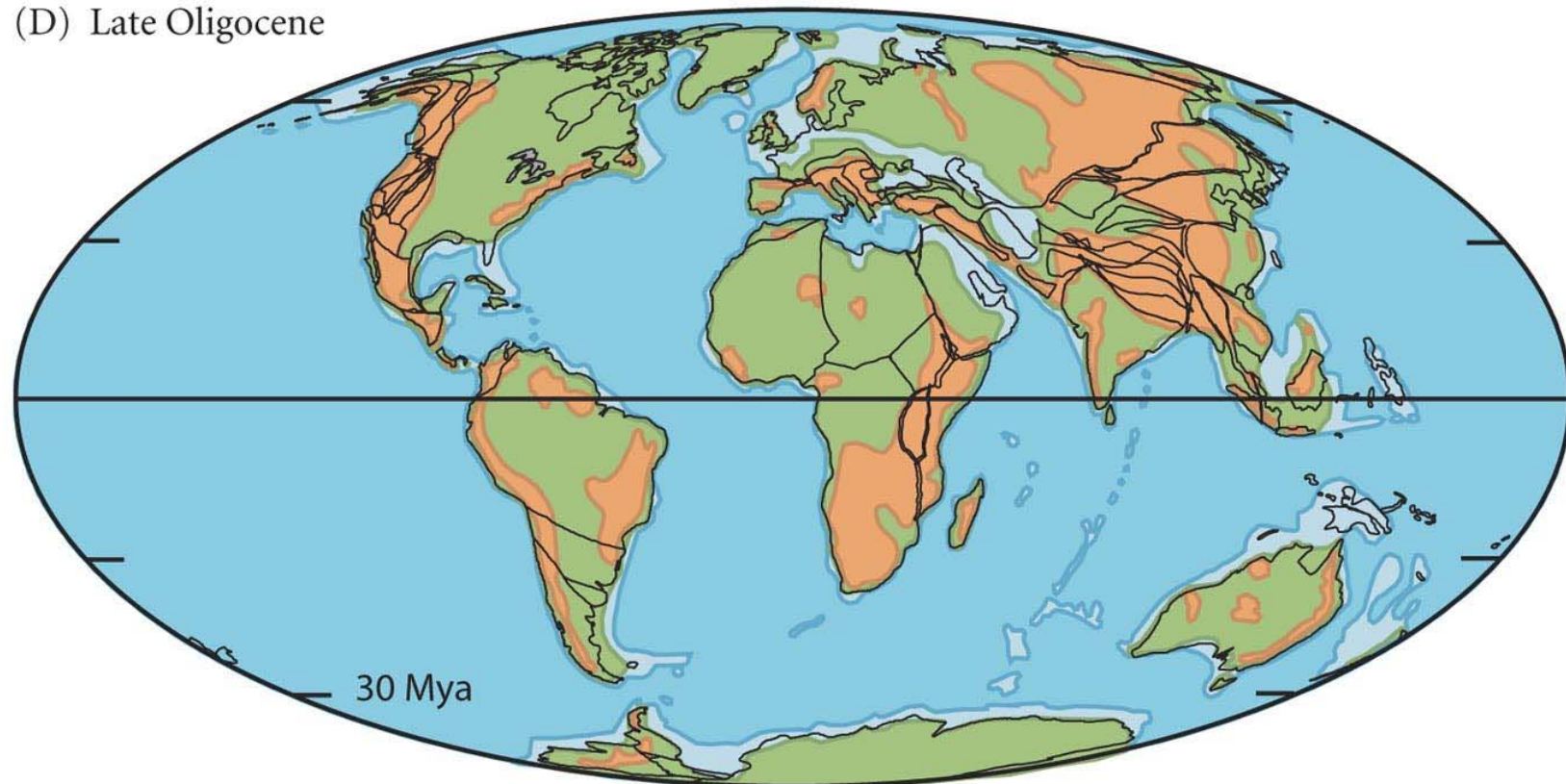


5.17(4) The distribution of land masses at several points in geological time

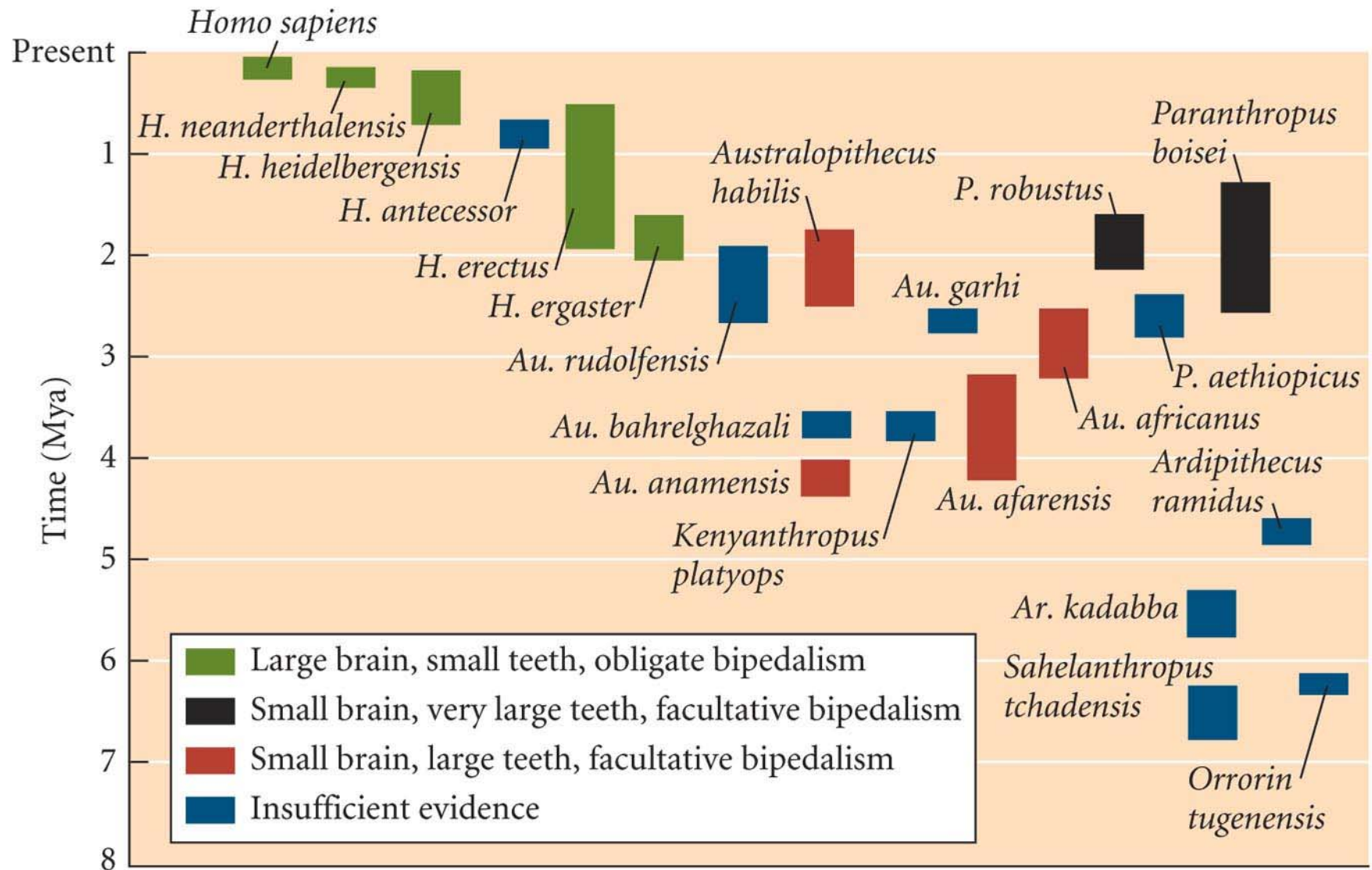


~25 Mya

(D) Late Oligocene

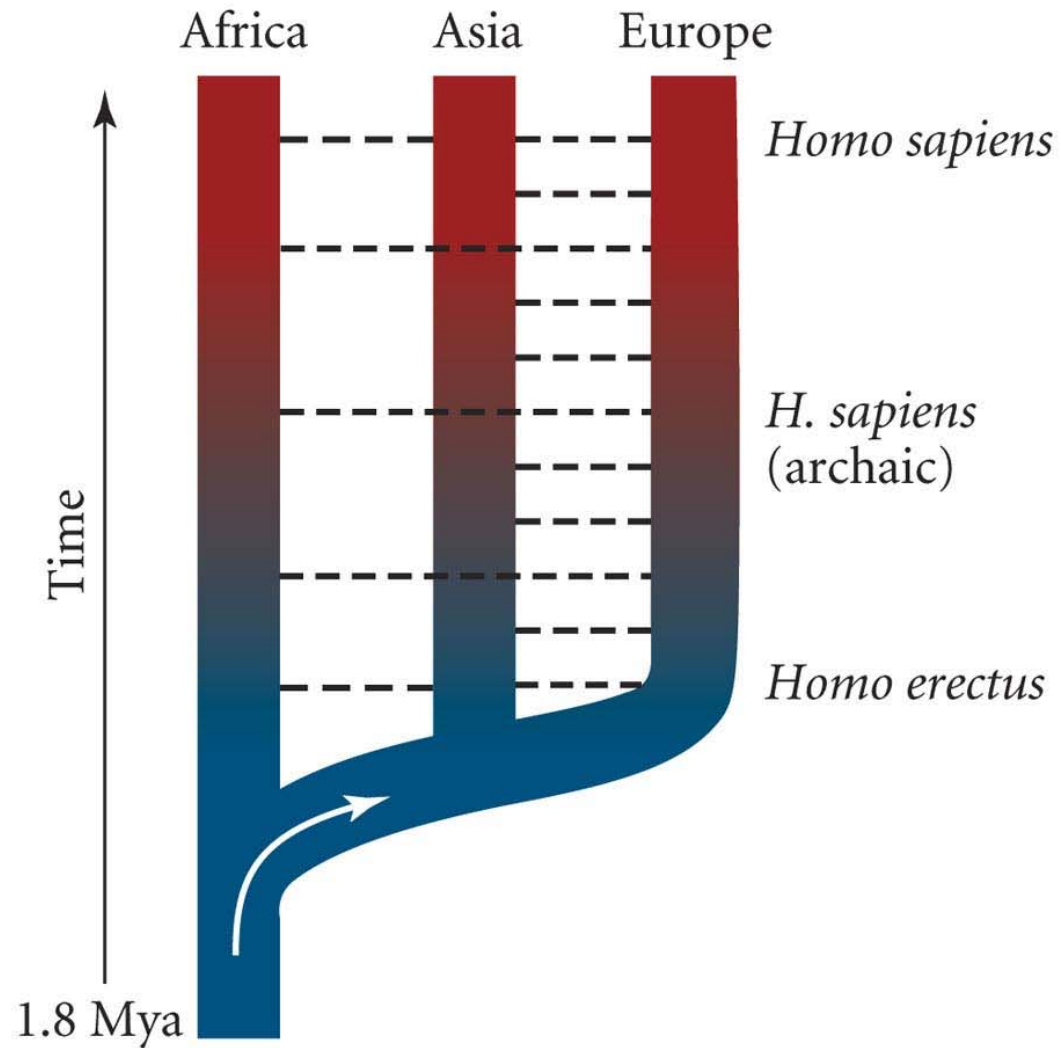


4.13 The approximate temporal extent of named hominin taxa in the fossil record



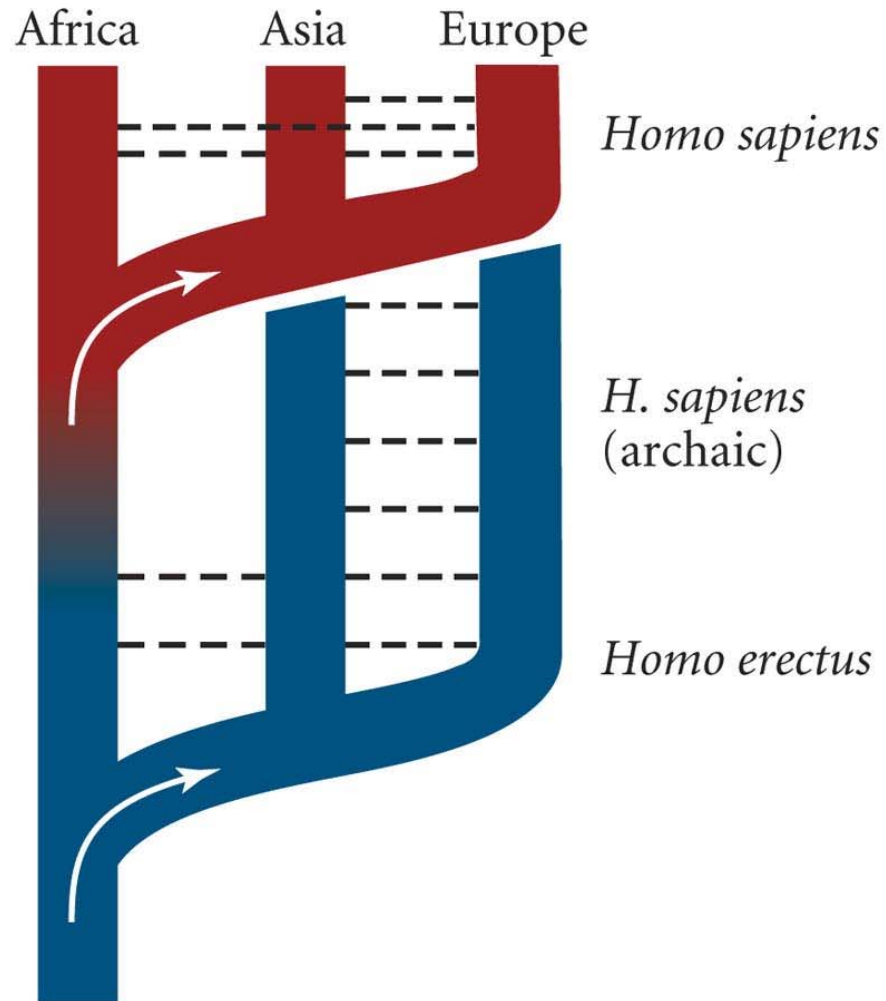
6.16(1) Two hypotheses on the origin of modern humans

(A) Multiregional hypothesis



6.16(2) Two hypotheses on the origin of modern humans

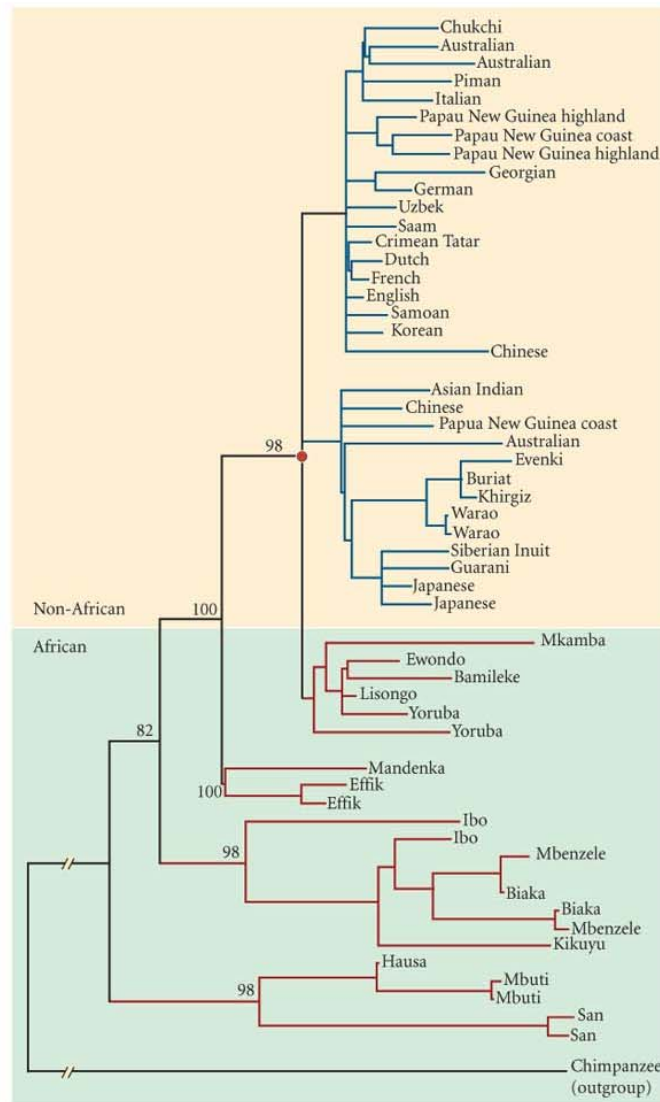
(B) Replacement hypothesis



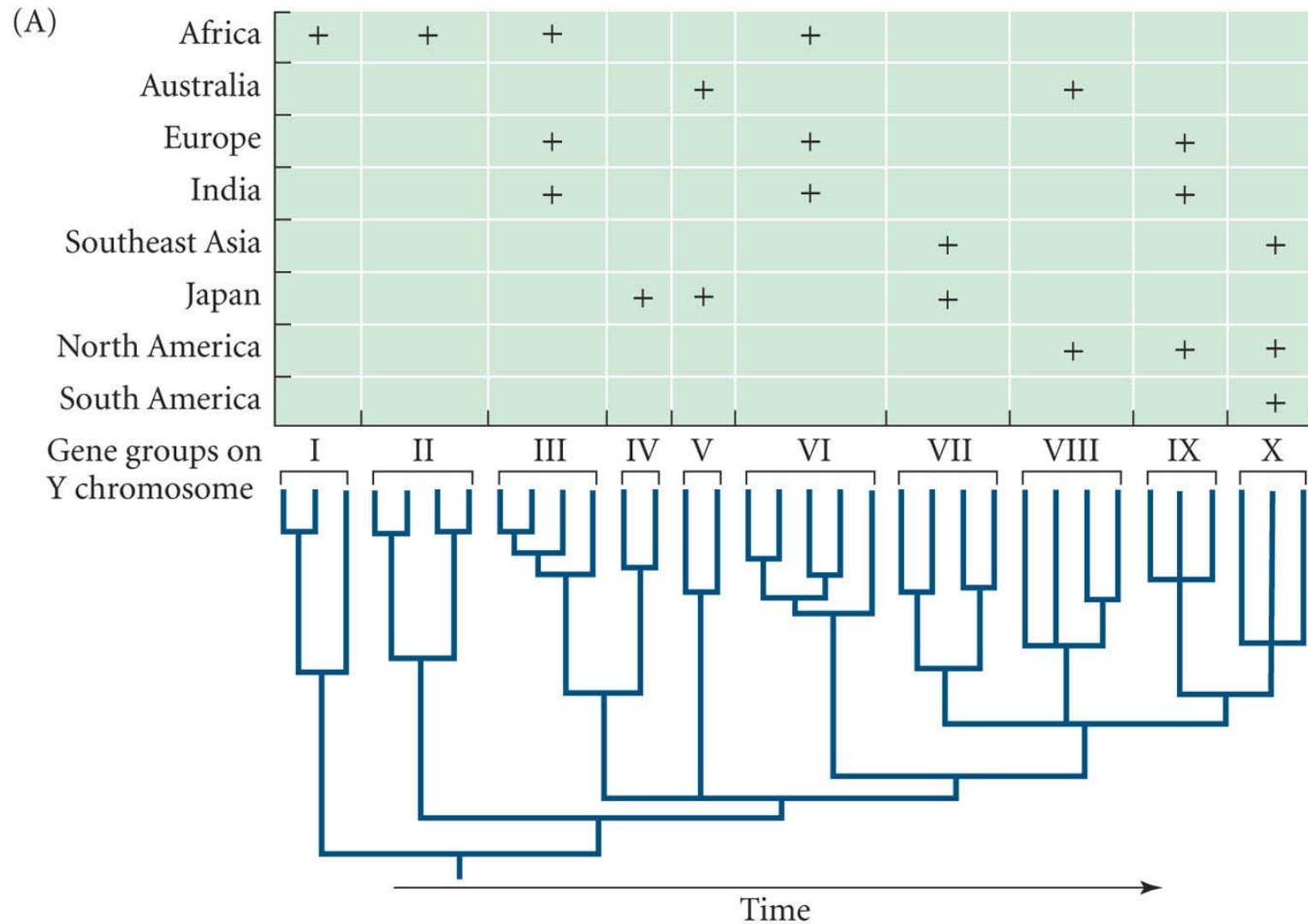
10.16 *Homo erectus* spread (~1.8 Mya) from Africa to Europe and Asia and evolved into *H. neanderthalensis*



6.17 Gene tree based on complete sequences of mitochondrial genomes from human populations



6.18(1) The movement of human populations from about 50,000 to 10,000 years ago



6.18(2) The movement of human populations from about 50,000 to 10,000 years ago

(B)

