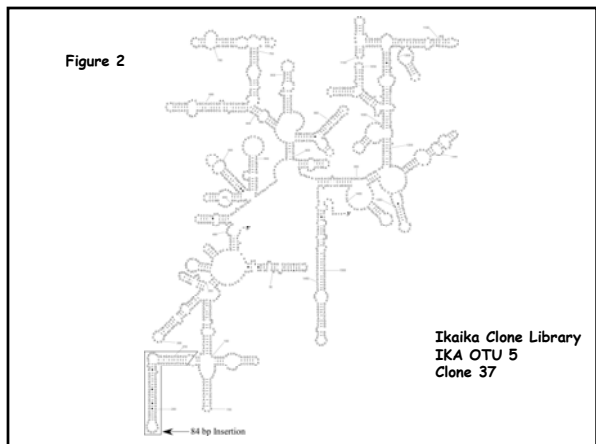
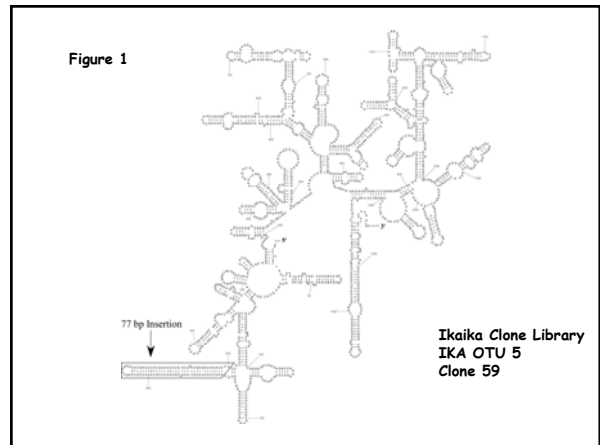


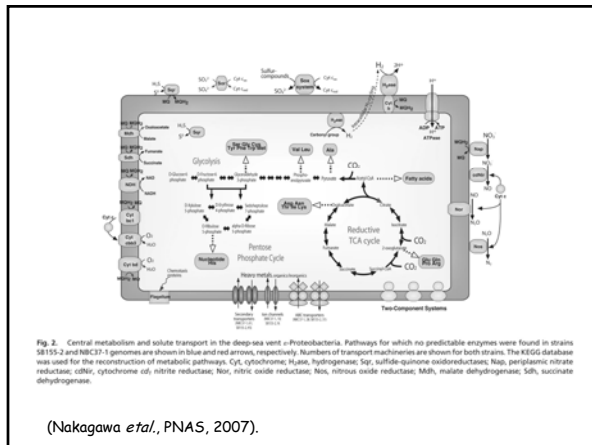
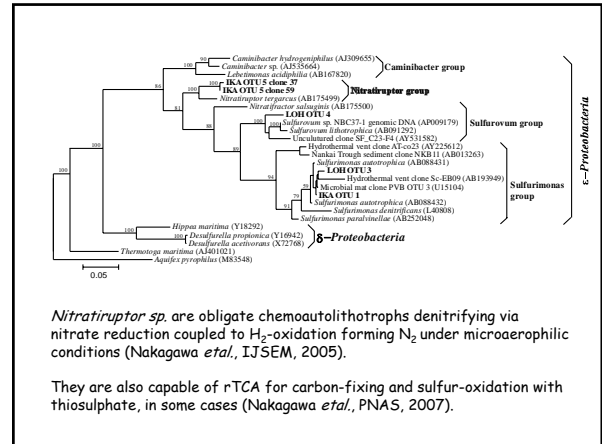
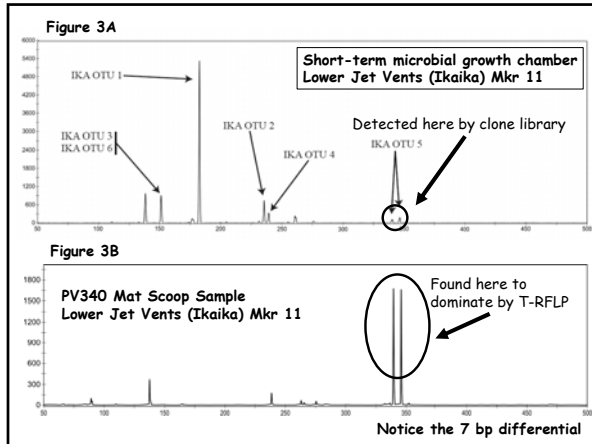
Fortuitous Phylotype Detection

- Clone library from Ikaika (aka Jet) vents yielded a pair of unusual clones with strange inserts in the cruciform region (see 2° structure maps; Figs 1 & 2).



Fortuitous Phylotype Detection

- T-RFLP analysis showed only minor peaks from the clone library source community (Fig 3A), but after further interrogation of the T-RFLP database we uncovered evidence for a community dominated by *Nitratiruptor* populations (Fig 3B) at the same location.
- Currently looking for other sites as well, e.g., Marker #39 @ Upper Hiolo Ridge.



Summary

- This new discovery was essentially made possible by having the FeMO T-RFLP database available to look for characteristic peaks along with using tools from RDP, Greengenes & Arb.
- We will now also try to track down the corresponding geochemical parameters to help us define the "multidimensional-hyperspace" these populations inhabit.