

Lecture Series 4
The Organization of Cells

The Organization of Cells

- A. The Cell: The Basic Unit of Life
- B. Prokaryotic Cells
- C. Eukaryotic Cells
- D. Organelles that Process Information
- E. Organelles that Process Energy

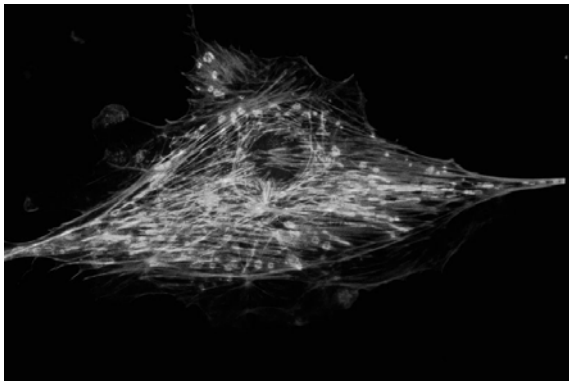
The Organization of Cells

- F. The Endomembrane System
- G. Other Organelles Enclosed by Membranes
- H. The Cytoskeleton
- I. Extracellular Structures

A. The Cell: The Basic Unit of Life

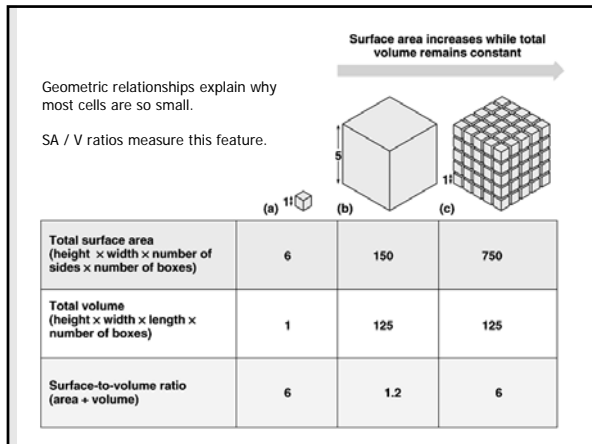
- Cell Theory: All cells come from preexisting cells and have certain processes, molecules, and structures in common.

Fluorescent stain of cell



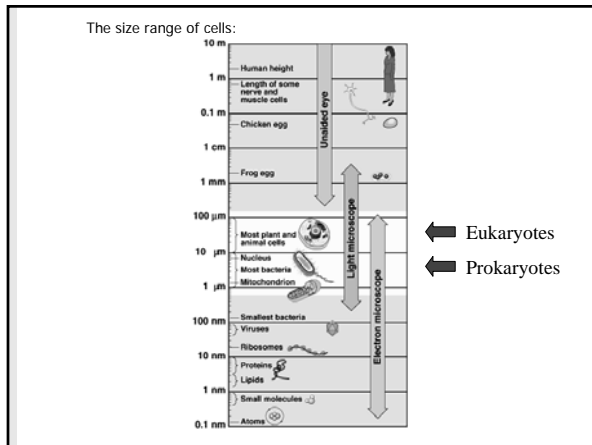
A. The Cell: The Basic Unit of Life

- To maintain adequate exchanges with its environment, a cell's surface area must be large compared with its volume.



A. The Cell: The Basic Unit of Life

- Microscopes are needed to visualize cells. Electron microscopes allow observation of greater detail than light microscopes do.



A. The Cell: The Basic Unit of Life

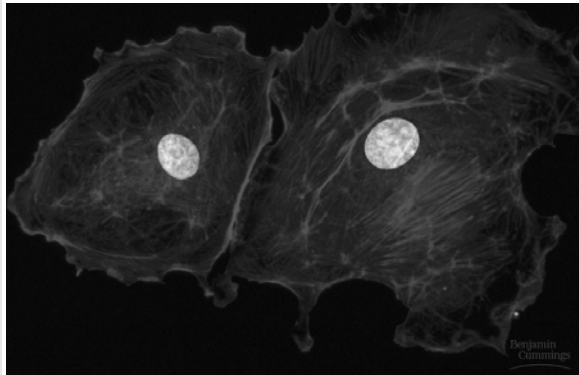
- Prokaryotic cell organization is characteristic of the domains *Bacteria* and *Archaea*.
- Prokaryotic cells lack internal compartments, i.e., no bags within bags of biochemistry.



A. The Cell: The Basic Unit of Life

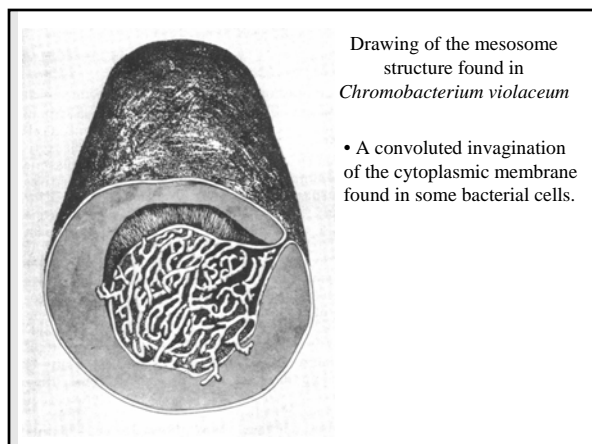
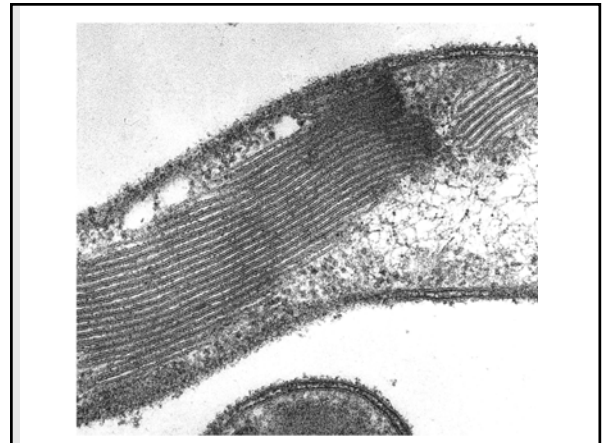
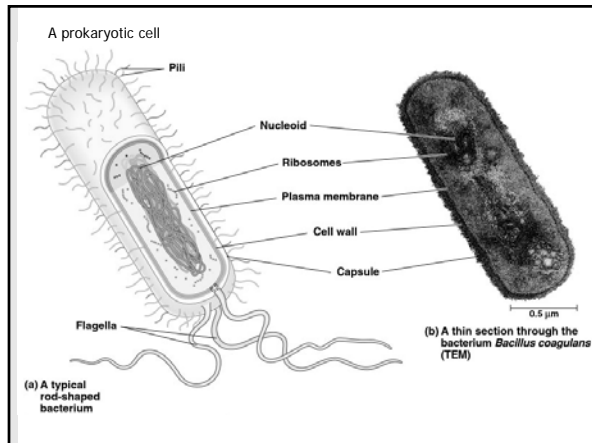
- Eukaryotic cells have many membrane-enclosed compartments, including a nucleus containing DNA.

Nuclei and Actin in Animal cells



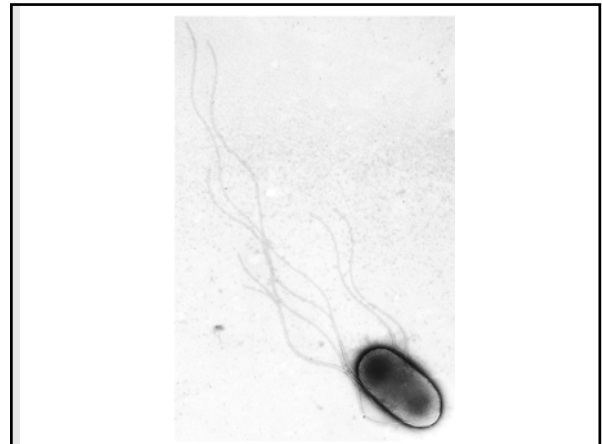
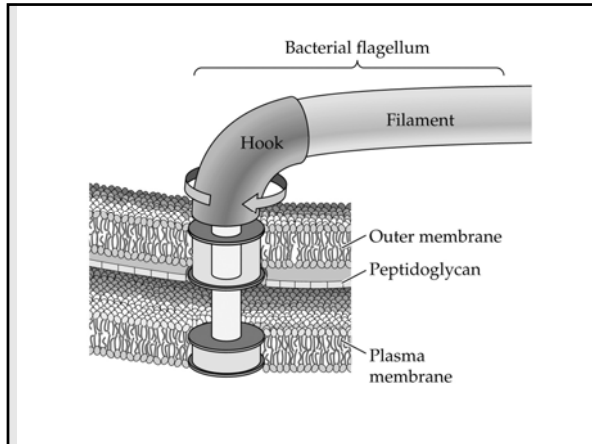
B. Prokaryotic Cells

- All prokaryotic cells have a plasma membrane, a nucleoid region with DNA, and a cytoplasm.
- Cytoplasm contains ribosomes and cytosol (dissolved enzymes, water, small molecules and dissolved macromolecules).
- Some prokaryotes have a cell wall, outer membrane and capsule, some contain photosynthetic membranes, and some have mesosomes.



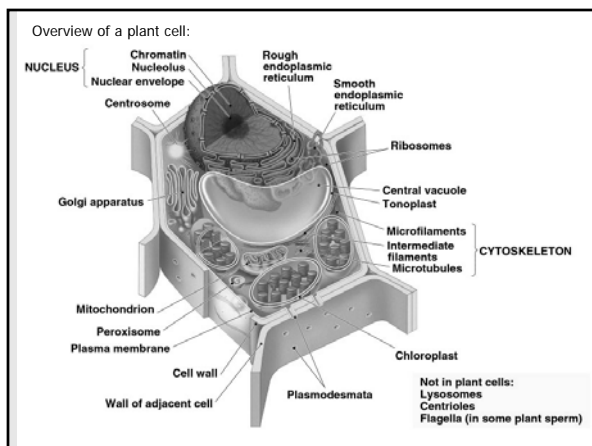
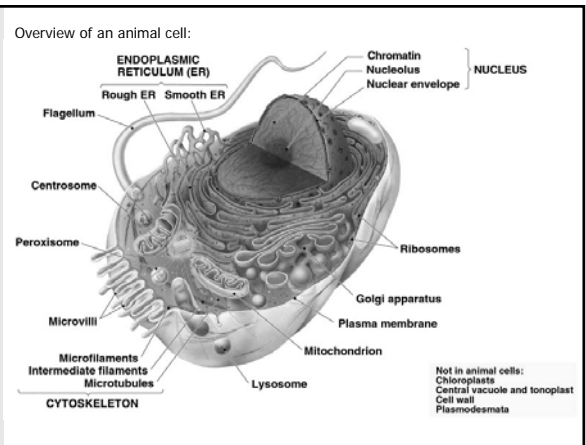
B. Prokaryotic Cells

- Some prokaryotes have rotating flagella for movement. Pili are projections by which prokaryotic cells attach to one another or to environmental surfaces.



C. Eukaryotic Cells

- Like prokaryotic cells, eukaryotic cells have a plasma membrane, cytoplasm, and ribosomes. However, eukaryotic cells are larger and contain many membrane-enclosed organelles.
- The compartmentalization of Eukaryotic cells is the key to their success and ability to carry out specialized functions. Requires endosymbiotic relationships to have occurred.



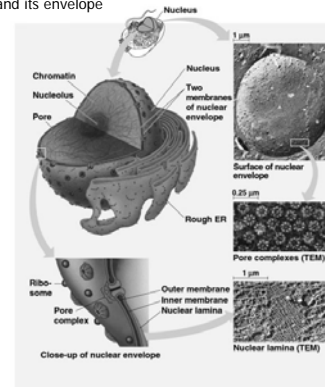
C. Eukaryotic Cells

- Membranes that envelop organelles in eukaryotic cells are partial barriers ensuring that the chemical composition of the organelle's interior differs from that of the surrounding cytoplasm.

D. Organelles that Process Information

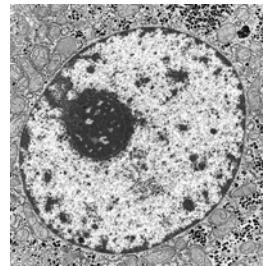
- The nucleus is usually the largest organelle in a cell. It is surrounded by the nuclear envelope.
- Nuclear pores have complex structures governing what enters and leaves the nucleus.
- Within the nucleus, the nucleolus is the source of the ribosomes found in the cytoplasm.

The nucleus and its envelope

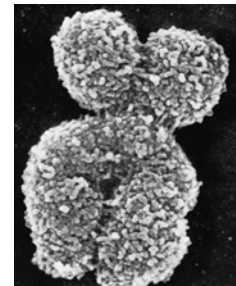


D. Organelles that Process Information

- Nuclear Lamina is a protein mesh that interacts with chromatin and supports nuclear envelope.
- The nucleus contains most of the cell's DNA, which associates with protein to form chromatin. Chromatin is diffuse throughout the nucleus. Just before cell division, it condenses to form chromosomes.
- Ribosomes are the sites of protein synthesis.

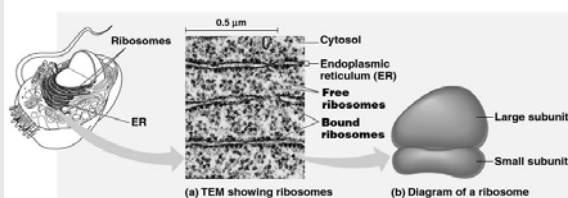


Chromatin: diffuse (in nucleoplasm) and dense (attached to nuclear lamina)



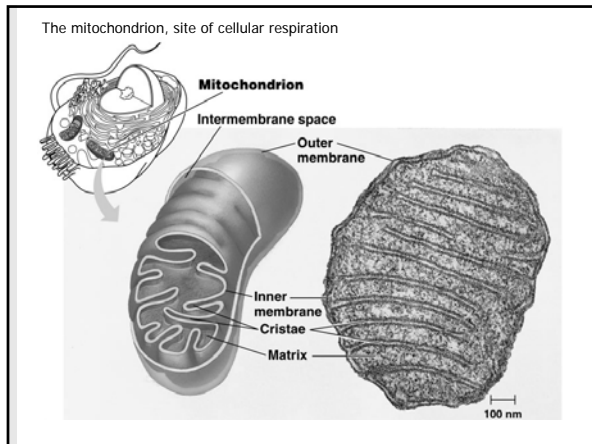
Chromosome: very dense packed bodies

Ribosomes: Free and Bound



E. Organelles that Process Energy

- Mitochondria are enclosed by an outer membrane and an inner membrane that folds inward to form cristae.
- Mitochondria contain proteins needed for cellular respiration and generation of ATP.
- They are the energy transformers in terms of performing cellular respiration.

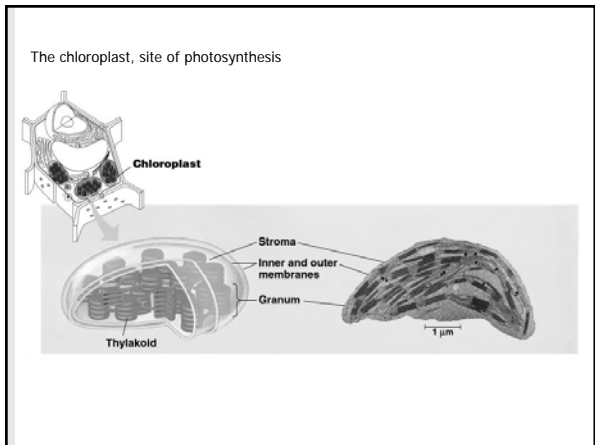


E. Organelles that Process Energy

- Plastids are another class of organelles used for photosynthesis or storage of materials.
 - Amyloplasts
 - Chromoplasts
 - Chloroplasts

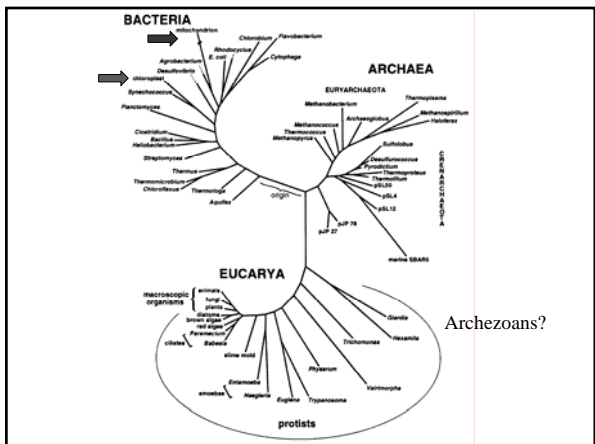
E. Organelles that Process Energy

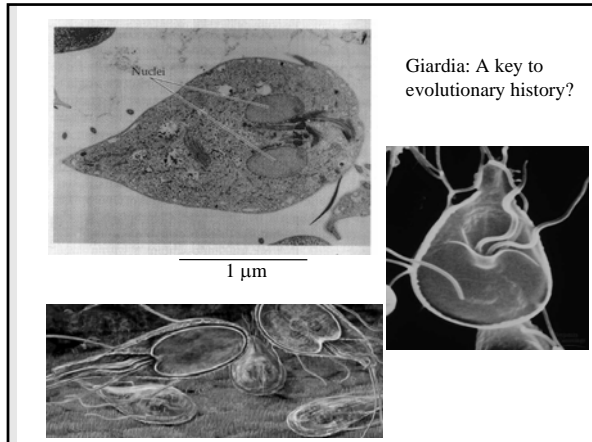
- Chloroplasts have a triple membrane system containing an internal system of thylakoids organized as stacks of grana.
- Thylakoids within chloroplasts contain the chlorophyll and proteins that harvest light energy for photosynthesis.



E. Organelles that Process Energy

- Mitochondria and chloroplasts contain their own DNA nucleoid and ribosomes and can make some of their own proteins.
- The endosymbiosis theory of the evolutionary origin of mitochondria and chloroplasts states that they originated when large prokaryotes engulfed, but did not digest, smaller ones. Mutual benefits permitted this symbiotic relationship to evolve into eukaryotic organelles of today.



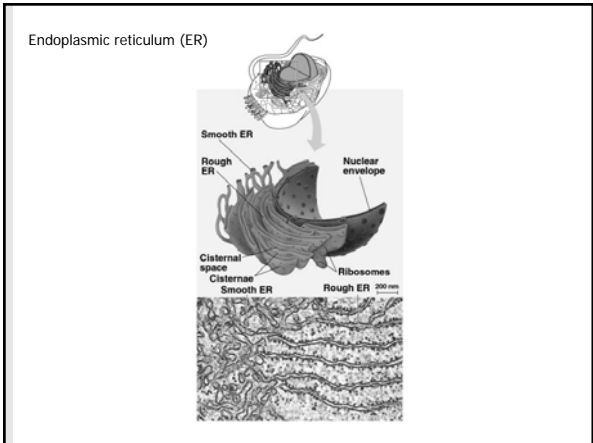


F. The Endomembrane System

- The endomembrane system is made up of a series of interrelated membranes and compartments.
- Is continuous with the nuclear envelope.
- This complex factory has a direction of flow in terms of the production of various cellular components and their further processing from the nuclear membrane to the plasma membrane.
- May accounts for more than half the total membrane in many eukaryotic cells.

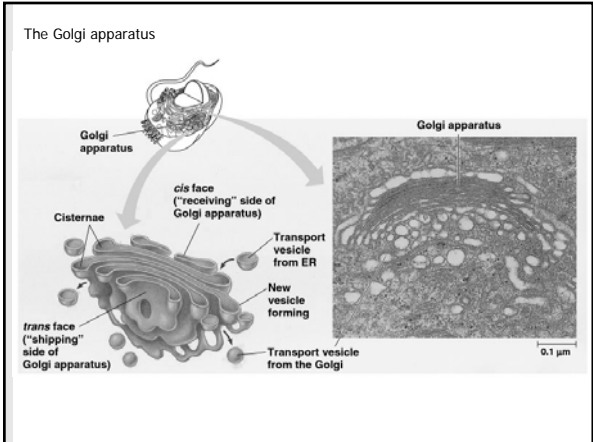
F. The Endomembrane System

- The rough endoplasmic reticulum has ribosomes that synthesize proteins.
 - ◆ RER produces proteins and membranes, which are distributed by transport vesicles.
- The smooth endoplasmic reticulum lacks ribosomes and is associated with synthesis of lipids. SER also:
 - ◆ Metabolizes carbohydrates
 - ◆ Stores calcium
 - ◆ Detoxifies poison



F. The Endomembrane System

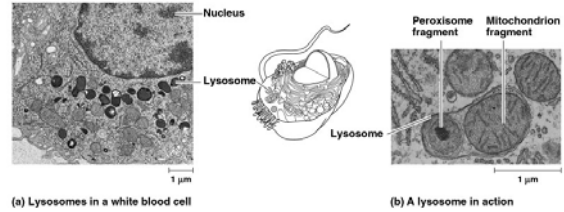
- The Golgi apparatus is the cellular post office; storing, modifying and packaging proteins.
- It receives materials from the rough ER via vesicles that fuse with the *cis* region of the Golgi.
- It adds signal molecules to proteins, directing them to various destinations.
- Vesicles originating from the *trans* region of the Golgi contain proteins for different cellular locations. Some fuse with the plasma membrane and release their contents outside the cell.



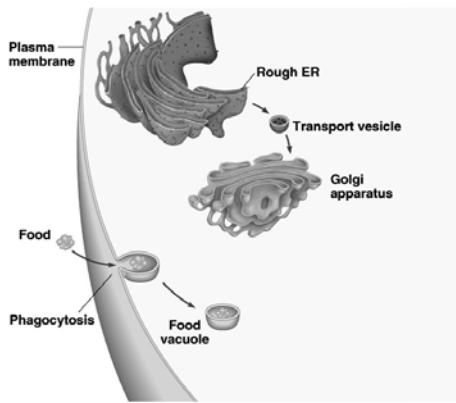
F. The Endomembrane System

- Primary lysosomes fuse with the phagosomes produced by phagocytosis to form secondary lysosomes, in which digestion occurs.
- Undigested materials are secreted from the cell when the secondary lysosome fuses with the plasma membrane.
- Hydrolysis reactions occur inside.
- Cell's recycling center.
- Programmed cell destruction.

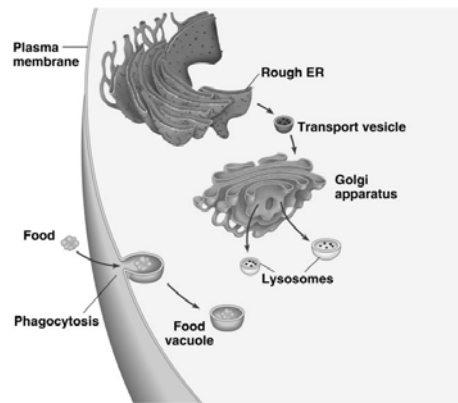
Lysosomes



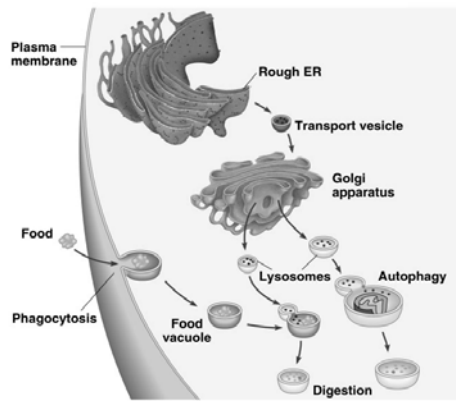
The formation and functions of lysosomes (Layer 1)



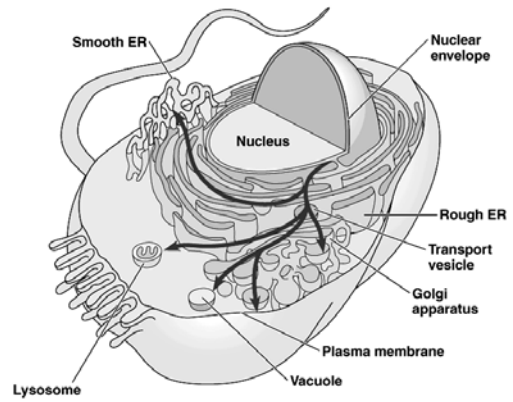
The formation and functions of lysosomes (Layer 2)



The formation and functions of lysosomes (Layer 3)

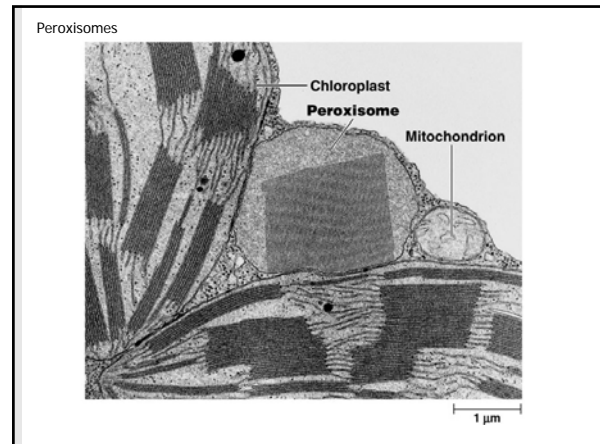


Review: relationships among organelles of the endomembrane system



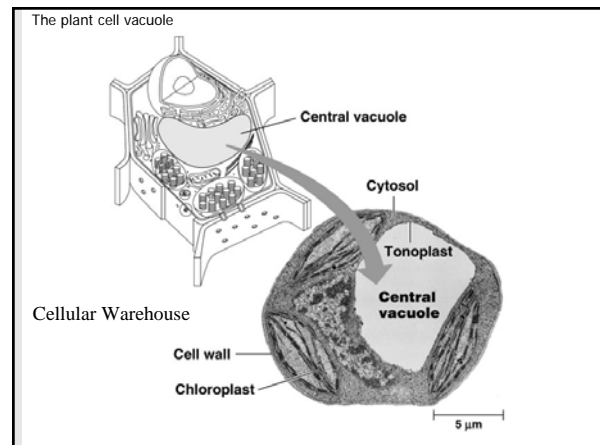
G. Other Organelles Enclosed by Membranes

- Peroxisomes and glyoxysomes contain special enzymes and carry out specialized chemical reactions inside the cell.
- Peroxisomes deal with excess hydrogen peroxide.
- Glyoxysomes break down stored lipids to sugars in mostly young plant cells.



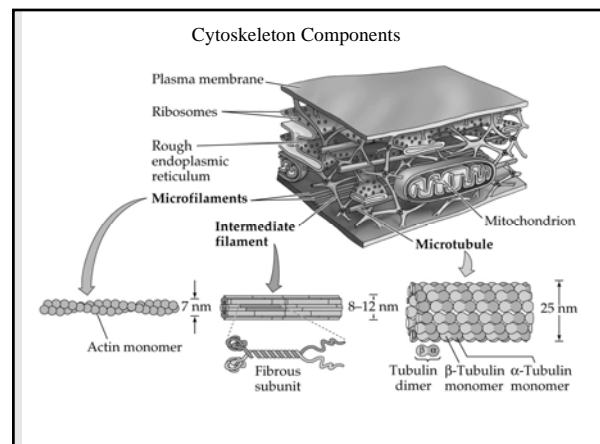
G. Other Organelles Enclosed by Membranes

- Vacuoles consist of a membrane-enclosed compartment of water and dissolved substances. They take in water and enlarge, providing pressure to stretch the cell wall and structural support for a plant.
- Tonoplast is part of endomembrane system.
- Various types:
 - Food Vacuole
 - Contractile Vacuule
 - Central Vacuole



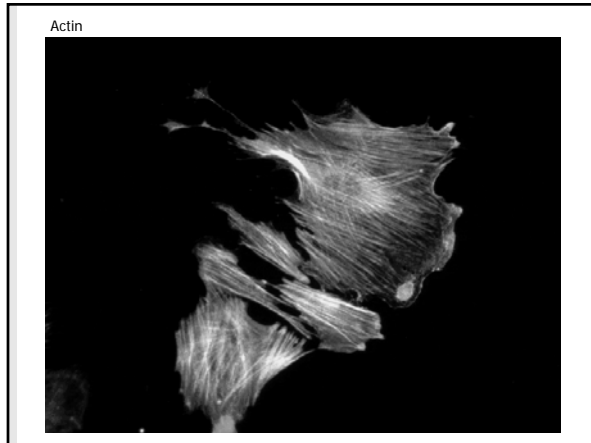
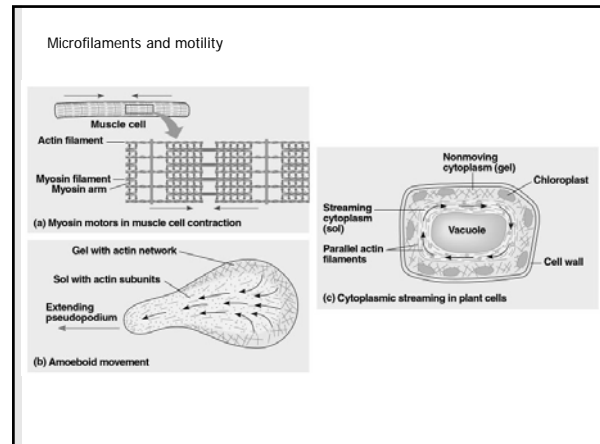
H. The Cytoskeleton

- The cytoskeleton within the cytoplasm of eukaryotic cells provides shape, strength, and movement. It consists of three interacting types of protein fibers.
 - Microfilaments (tension-bearing)
 - Intermediate filaments (tension-bearing)
 - Microtubules (compression-resistant)



H. The Cytoskeleton

- Microfilaments consist of two chains of actin units forming a double helix.
- Microfilaments strengthen cellular structures and maintain cell shape.
- Involved with the protein myosin in muscle contraction.
- In animal cell division, forms cleavage furrow.
- Also used in cytoplasmic streaming and pseudopod extension (cell motility).

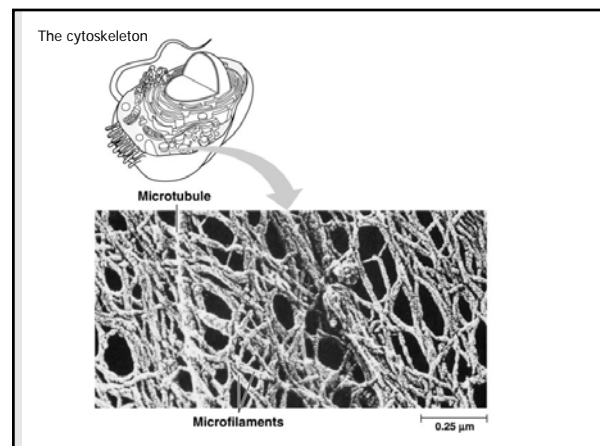


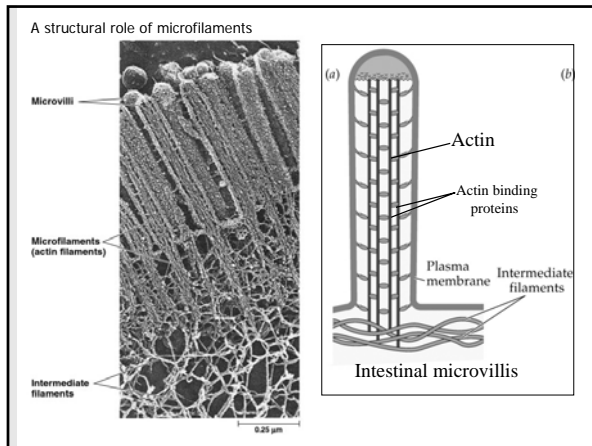
H. The Cytoskeleton

- Intermediate filaments are formed of keratins and add strength to cell structure.
- Anchorage of nucleus and other organelles.
- Formation of nuclear lamina.
- Maintain attachments in multicellular organisms through desmosome anchoring.

H. The Cytoskeleton

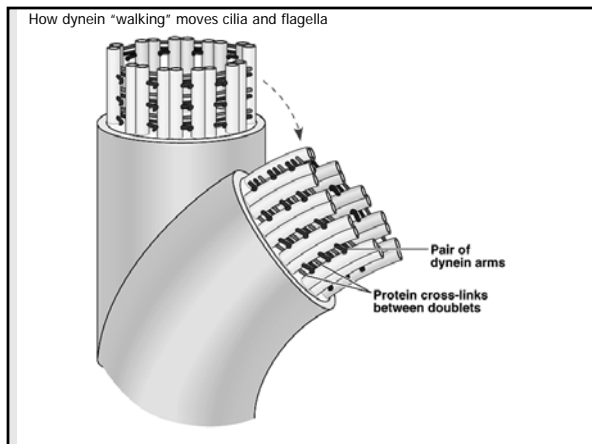
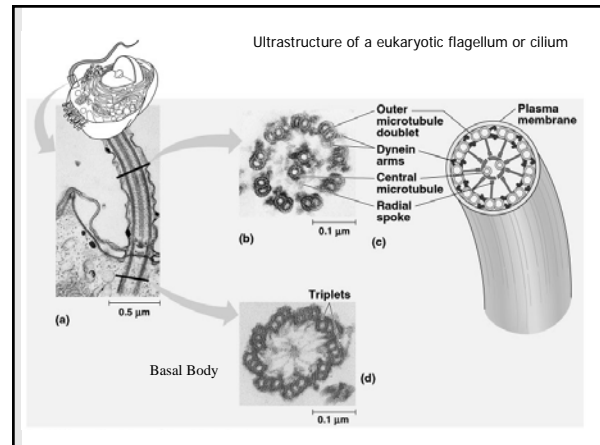
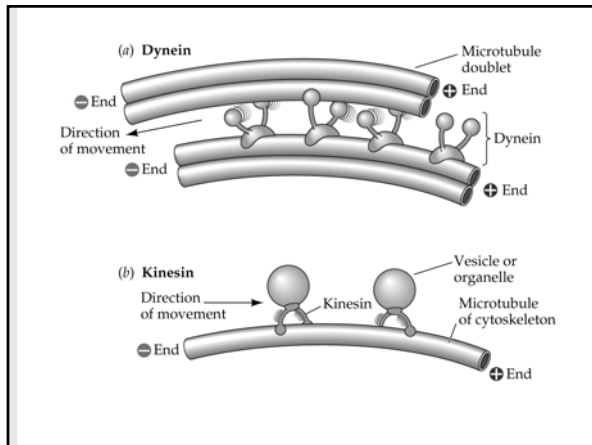
- Microtubules are composed of dimers of the protein tubulin, and can lengthen and shorten. Cilia and flagella both have a characteristic 9 + 2 pattern of microtubules.





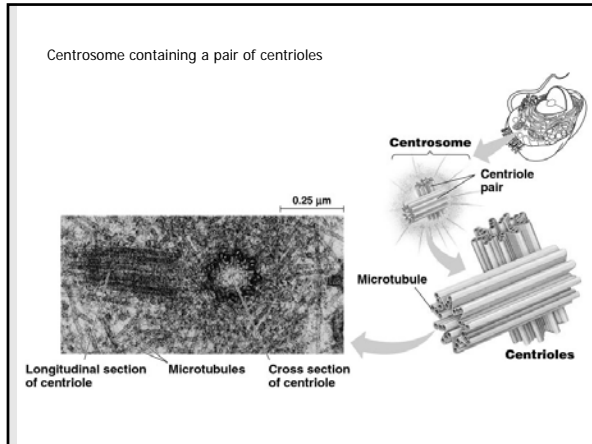
H. The Cytoskeleton

- Movements of cilia and flagella are due to binding of the motor protein dynein to microtubules. Microtubules also bind motor proteins that move organelles through the cell.



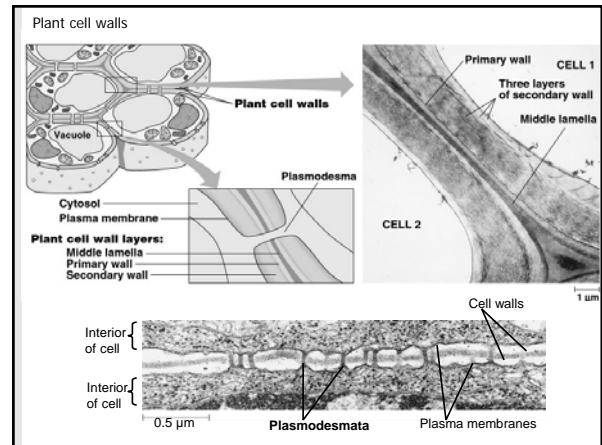
H. The Cytoskeleton

- Centrioles, made up of fused triplets of microtubules, are involved in the distribution of chromosomes during nuclear division.



I. Extracellular Structures

- Materials external to the plasma membrane provide protection, support, and attachment for cells in multicellular systems.
- Cell walls of plants consist principally of cellulose embedded in other polysaccharides and proteins forming multiple layers.
- They are pierced by plasmodesmata that join the cytoplasm of adjacent cells.



I. Extracellular Structures

- In multicellular animals, the extracellular matrix consists of different proteins, including proteoglycan. In bone and cartilage, collagen predominates.

